



April 25



MORE ABOUT THIS DESIGN

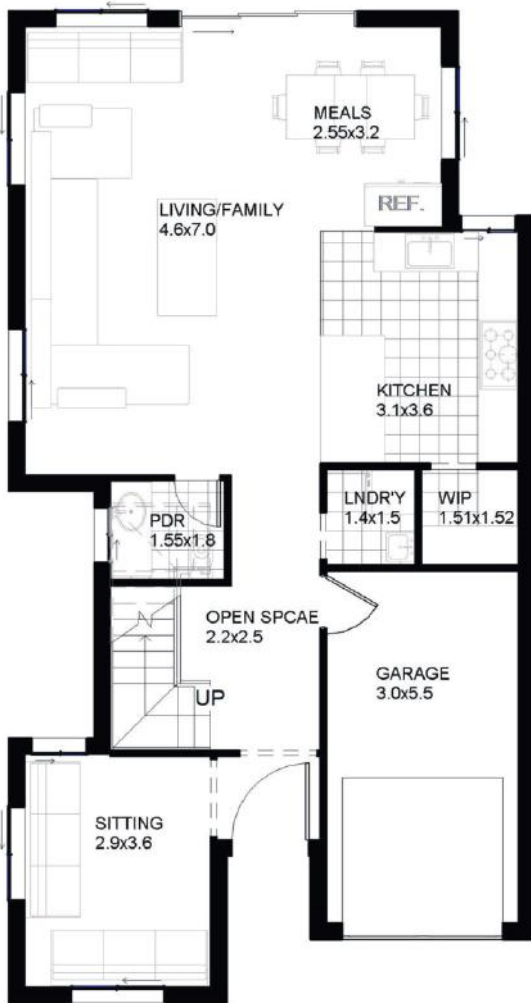
This is designed with family in mind with multiple living areas. Huge family area and walk in pantry. Big hallway opening upon entering from the door creates the impression of much bigger home. With upstairs rumpus areas there are three separate living areas. Very versatile and sitting area can be easily converted to an additional bedroom.

Highlights: Suits narrow lots, plenty spacious living areas, ability to add additional bedroom at Ground floor, Balcony.

Options to add: Fifth Bedroom, and double garage.



April 25



Specifications

House Width	8.2 m	House Depth	15.97 m	Ground Floor	92 sqm
First Floor	101 sqm	Alfresco	13 sqm	Balcony	3 sqm
Patio	3 sqm	Garage	19 sqm	Sitting	3.22 X 4.38 m
Living/Family	4.6 X 6.5 m	Rumpus	2.8 X 3.3 m	Master Bedroom	4.16 X 4.45 m
Total Area	231 sqm				

