

Ruby
COLLECTION

Fewa 21



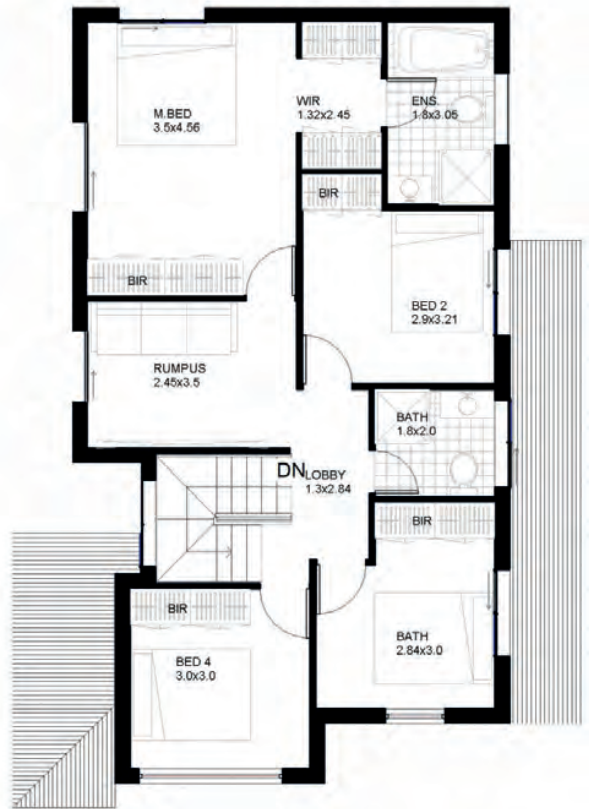
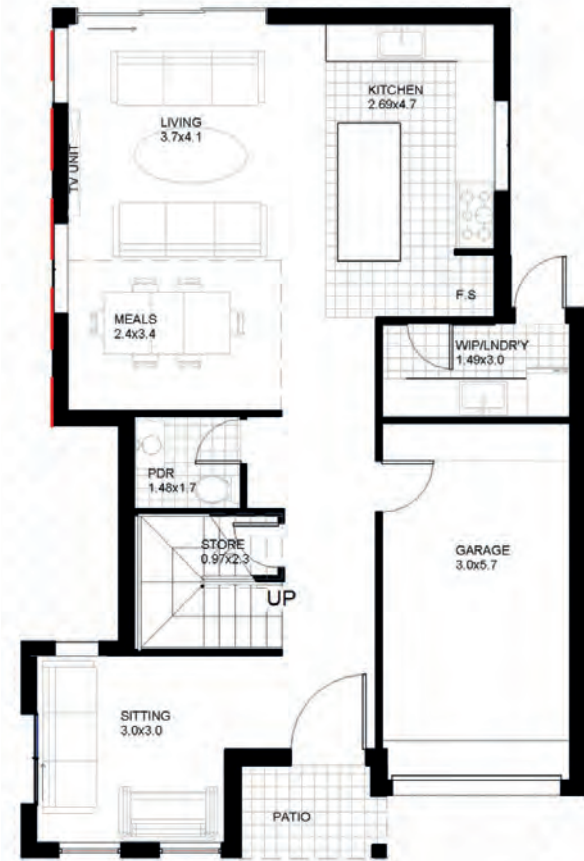
MORE ABOUT THIS DESIGN

Fewa is built with a huge focus on families with multiple living spaces. As per name despite its size the house offers depth, character, and space. Especially suited to narrow lots and can be customised to fit most land. Name is derived from a Lake situated in Pokhara drawing similarities with rich character and picturesque despite the size. The floor plans do offer flexibility to be able to customise and add more character to blend with your family needs.

Options to add: Alfresco, Balcony and Double Garage.



Fewa 21



Specifications

House Width	9.0 m	House Depth	13.575 m	Ground Floor	82 sqm
First Floor	87 sqm	Patio	3 sqm	Garage	19 sqm
Sitting	3.0 X 3.0 m	Living plus dinning	6.1 X 7.5 m	Family Rumpus	2.45 X 3.5 m
Master Bedroom	3.54 X 4.56 m	Total Area	191 sqm		

