



Glenelg 22



MORE ABOUT THIS DESIGN

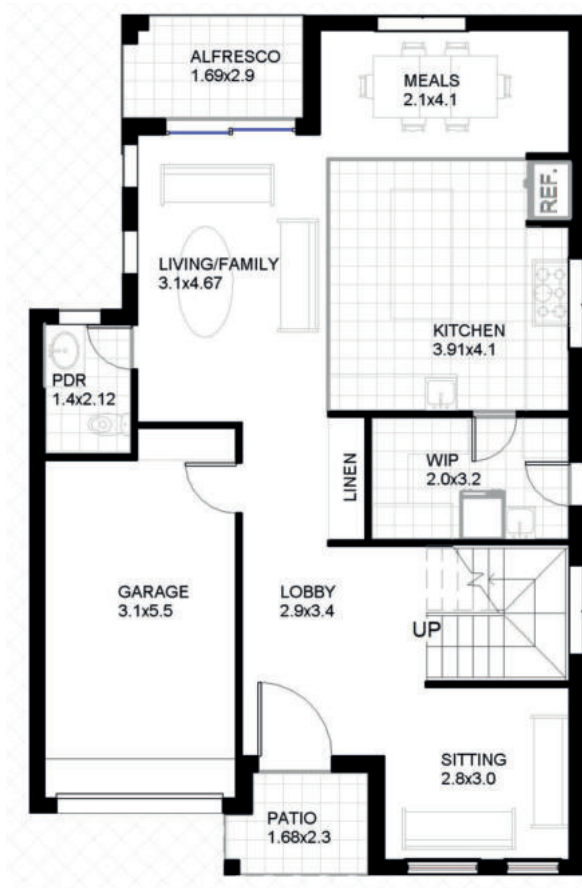
Glenelg is designed to suit a narrow lot but surprisingly offers a spacious living area inspired by a vibrant lifestyle and compact living from a South Australian suburb. The wide opening lobby conceals the staircase giving the impression of a huge home. Clever use of floor plan allows optimal living areas. With a pantry, upstairs rumpus and Ensuite with a bathtub there is no compromise in quality living.

Highlights: Suits narrow lots, plenty spacious living areas, ability to add additional bedroom at Ground floor, Balcony

Options to add: Fifth Bedroom, Balcony, and double garage.



Glenelg 22



Specifications

House Width	9 m	House Depth	13.95 m	Ground Floor	87 sqm
First Floor	87 sqm	Alfresco	5 sqm	Balcony	Optional
Patio	4 sqm	Garage	19 sqm	Sitting	2.8 X 3.0 m
Living/Family	3.1 X 4.67 m	Rumpus	2.5 X 3.7 m	Master Bedroom	3.3 X 3.9 m
Total Area	202 sqm				

