



RUBY
H O M E S
We Build Homes

Ruby
COLLECTION

Shahi

5 5 2 3

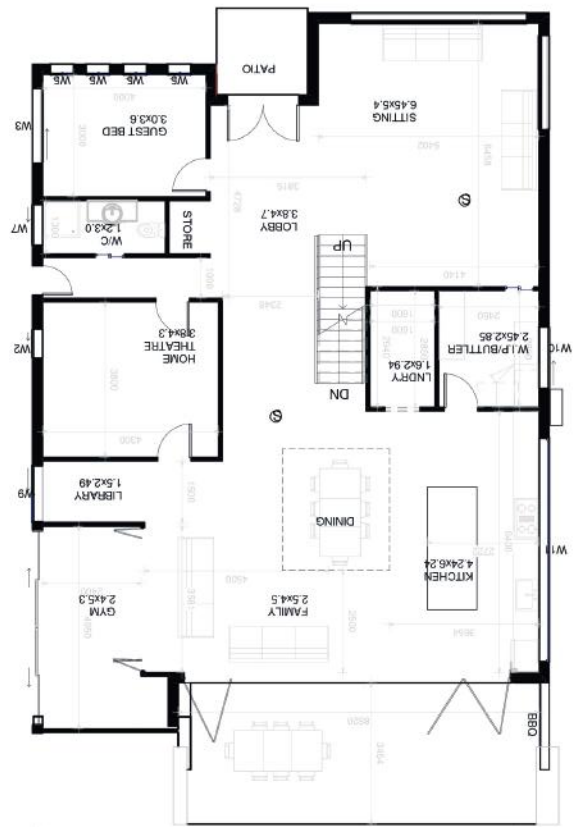
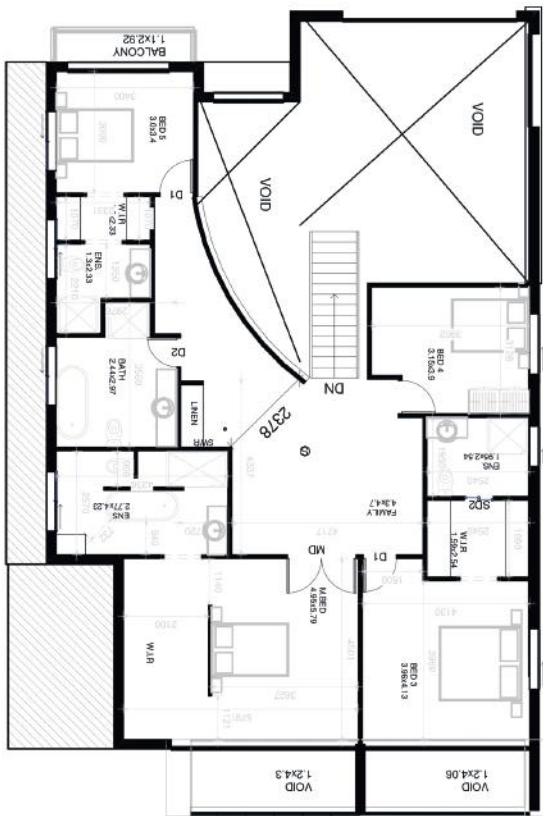


MORE ABOUT THIS DESIGN

Shahi is signature collection with lavish finish. With huge open plan living and multiple living areas the design seamlessly flows through. Shahi offers all comfort and amenities with modern façade and talk of the street. Basement car park, gym and library offering outdoor living with pool.



Shahi



Specifications

Ground Floor	201 sqm	First Floor	148 sqm	Alfresco	30 sqm
Patio	5 sqm	Balcony	3 sqm	Basement Car Park	45 sqm
Sitting	6.45 X 5.4 m	Home Theatre	3.8 X 4.3 m	Family Upstairs	4.3 X 4.7 m
Master Bedroom	4.95 X 5.79 m	House Depth	19.84 m	House Width	12.635 m
Total Area	422 sqm				

