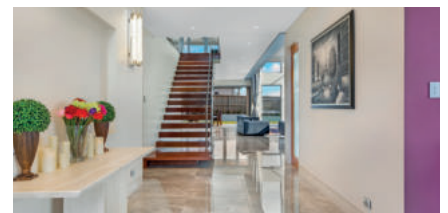




Ayer's 65



MORE ABOUT THIS DESIGN

Ayer's is an open plan contemporary design built under the Signature series as a pinnacle in luxury. With the inspiration coming out of the Ayers Rock this home boasts a specially crafted aluminium panel in the upper façade that changes different colours in consistent with reflection from the sun throughout the day.

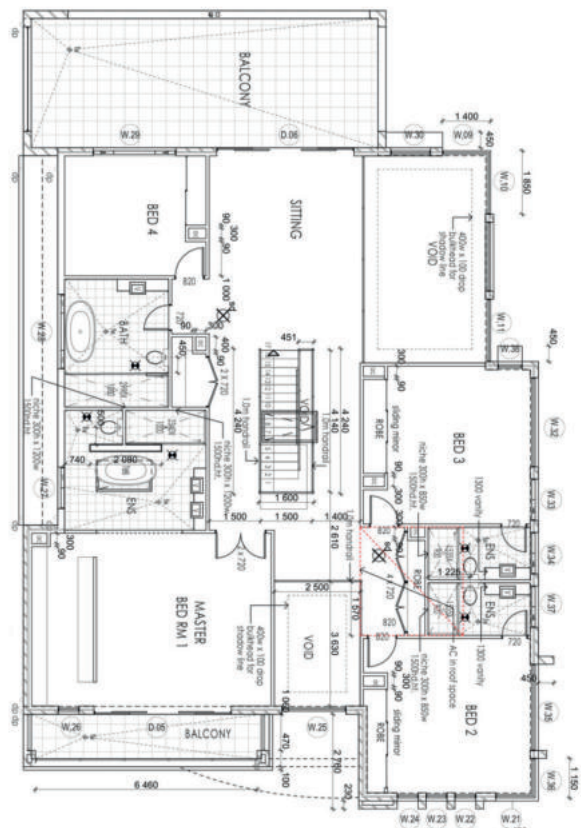
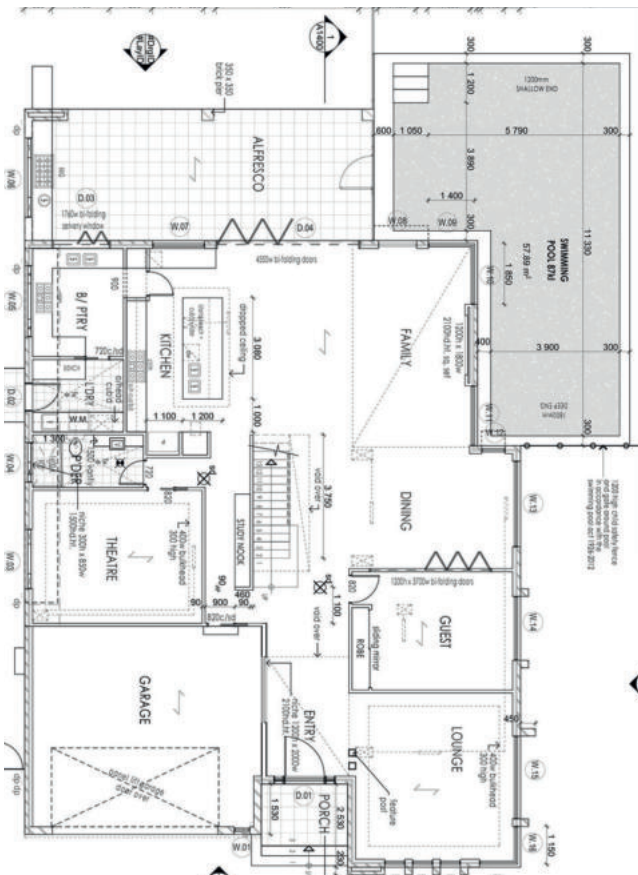
Home boasts large windows and glass edges that show the sophisticated and technical expertise to create such a masterpiece. North facing, the house boosts natural light throughout still ensuring energy efficient with double glazed glass and airtight specially crafted windows.

Highlights: Exception quality finish throughout. Future proof home with technology enhancement. Spacious modern living.



Ayer's 65

 5	 5	 2	 3
---	---	---	---



Specifications

Ground Floor	217 sqm	First Floor	242 sqm	Alfresco	42 sqm
Porch	5 sqm	Garage	46 sqm	Balcony	53 sqm
Lounge	4.7 x 5.06 m	Living plus dining	8.47 X 6.24 m	Family Rumpus	4.4 X 6.1 m
Master Bedroom	6.9 X 5.5 m	House Depth	23.29 m	House Width	15.24 m
Total Area	606.42 sqm				

